



ALEHSAN COMPANY FOR EXPORT IS A SYRIAN FRESH PRODUCE EXPORTER WITH ITS FIRST HEAD OFFICE BASED IN SYRIA. SET UP BY ITS OWNER AND GENERAL MANAGER NOMAN SALIM ABD ELDAEM IN 1990 THE COMPANY'S BUSINESS HAS GROWN SUBSTANTIALLY OVER THE PAST YEARS. IN 2000 WE OPENED OUR EGYPT SUBSIDIARY OFFICE, AL EHSAN. THIS WIDENED THE COMPANY'S PORTFOLIO WITH AN EFFECTIVE DIRECT-SUPPLY BASED FRUIT BUSINESS TO COMPLEMENT ITS CORE FRUIT LINES. THIS ACHIEVED GREATER ECONOMIES OF SCALE IN BOTH ITS BUYING POWER AND LOGISTICAL APPROACH. THE MOVE HAS STRENGTHENED BOTH OUR CUSTOMER AND GROWER RELATIONSHIPS AND PROVIDED A CLEARER UNDERSTANDING OF THEIR CHANGING REQUIREMENTS WHILE AT THE SAME TIME DEVELOPING A MORE COST EFFECTIVE AND EFFICIENT DIRECT SOURCE OF SUPPLY.

A TRULY WORLDWIDE OPERATOR, ALEHSAN COMPANY WORKS WITH GROWERS/EXPORTERS IN EGYPT, KSA, RUSSIA, SPAIN, SOUTH AFRICA, AND EUROPE. AS A COMPANY WE ARE CONTINUALLY LOOKING FOR NEW OPPORTUNITIES WHILE BEING FAIR TO OUR SUPPLIERS.

ACTIVITIES:

- * THE COMPANY CONTAINS A STATION FOR PRODUCING AND CANNING FRUITS AND CITRUS FRUITS SUCH AS; ORANGES, LEMONS, GRAPEFRUITS AND MANDARINS AND OTHERS.
- * THE COMPANY PREPARES THE PRODUCT STARTING FROM SELECTING, WASHING, CHECKING, HEALTHY WAXING AND PRESERVING ACCORDING TO THE CRITERIA OF EXPORTING TO COUNTRIES ALL OVER THE WORLD.

EXCELLENCE:

- * ALEHSAN COMPANY HAS ALWAYS BEEN THE HOME OF INTERNATIONAL TRADE AND HAS ITS PIONEERING ROLE IN MANUFACTURING AND EXPORTING FRUITS AND VEGETABLES IN AFRICA, EUROPE AND ASIA AS A RESULT OF THE ACCURACY AND THE EXERTED EFFORTS TO SATISFY ALL OUR CUSTOMERS AND CLIENTS.
- * THE COMPANY IS DISTINGUISHED BY THE QUALITY OF ITS FRIDGES IN TERMS OF FREEZING AND PRECOOLING AND PROCESSING AND WE HAVE ACCREDITED FRIDGES FROM SOME COUNTRIES.
- * THE COMPANY HAS CERTIFICATED **ISO 9001** AND **ISO 22000** FOR EXCELLENCE.

DEALING WITH US IS VERY COMFORTABLE AS WELL AS PROFITABLE

AL EHSAN MAIN FOCUSES ARE TO:

- * SUPPLY ITS CUSTOMERS ALL OVER THE WORLD WITH THE HIGHEST QUALITY PRODUCTS THAT MEET THE EU STANDARDS AND MATCH WITH THE REGULATIONS OF THE IMPORTED COUNTRY
- * DELIVERING THE FRESH FRUITS AND VEGETABLES WITHIN THE SHORTEST TRANSIT TIME TO KEEP ITS REAL FRESHNESS AND QUALITY
- * ALWAYS SEEKING THE EVERLASTING BUSINESS CO-OPERATION WITH ITS CUSTOMERS, AL EHSAN IS SHARING THE MARKET CONDITIONS WITH ITS CUSTOMERS
- * COMPLYING WITH THE EU QUALITY ASSURANCE STANDARDS AND REGULATIONS, SPECKING, PESTICIDE CONTROL AND PRODUCT TRACEABILITY
- * DOING OUR BEST TO GET OUR CUSTOMERS FULLY SATISFIED WITH OUR PRODUCTS AND SERVICES

AL EHSAN IS COMMITTED TO MEET THE FOLLOWING REQUIREMENTS AND NEEDS FOR ITS

CUSTOMERS:

- * ANY LEGAL, TRADING, AND ANY OTHER BUSINESS REQUIREMENTS. ESTABLISHING AND MAINTAINING A BRAND NAME OF EXCELLENCE FOR ALL ITS FRESH PRODUCTS
- * PRODUCING FRESH FRUITS AND VEGETABLE WITH THE FINEST QUALITY, SAFE AND HEALTHY PRODUCTS
- * ALWAYS MEET THE FULL NEEDS AND SATISFACTIONS OF OUR CUSTOMERS ALL OVER WORLD

PACKING INFORMATION

ORANGE IS A TYPE OF CITRUS PRODUCED BY THE ORANGE TREE AND IS AN EXCELLENT SOURCE OF VITAMIN C THE VITAMIN C IN ORANGES HELPS TO ABSORPTION CALCIUM IN THE BODY IT ALSO CONTAINS VITAMIN A

AVAILABLE TIME



PACKAGE TYPE	TELESCOPIC CARTON	OPEN TRAY 7.5 KG	OPEN TRAY 15 KG
CARTON PER PALLET	70/80	140	65/70
PACKING TYPE	By COUNT	By COUNT	By CALIBER

CALIBER	DIAMETER INDEX (MM)	COUNT	L.W. (KG.NET)	L.W. (KG.NET)	CALIBER
1	88 - 93	40	14.9	COUNT 20 (7.5)	15
2	84 - 88	48	15	COUNT 20 (7.5)	15
3	80 - 85	56	15	COUNT 28 (7.5)	-
4	77 - 82	64	15	COUNT 30 (7.5)	-
5	73 - 78	75	15	COUNT 32 (7.5)	-
6	69 - 74	88	15	-	-
7	66 - 71	100	15	-	-
8	63 - 68	113	-	-	-
9	59 - 64	125	-	-	-



PACKING INFORMATION

IT HAS A LARGE AMOUNT OF JUICE MORE THAN NAVEL ORANGE AND ALSO HAS MORE QUANTITY OF VITAMIN C AND HAS A SOFTER TEXTURE AND MORE NUTRITION THAN OTHER CITRUS VARIETIES



AVAILABLE TIME



PACKAGE TYPE	TELESCOPIC CARTON	OPEN TRAY 7.5 KG	OPEN TRAY 15 KG
CARTON PER PALLET	70/80	140	65/70
PACKING TYPE	By COUNT	By COUNT	By CALIBER

CALIBER	DIAMETER INDEX (MM)	COUNT	L.W. (KG.NET)	L.W. (KG.NET)	L.W. (KG.NET)
1	88 - 93	40	15	COUNT 20 (7.5)	15
2	84 - 88	48	15	COUNT 24 (7.5)	15
3	80 - 85	56	15	COUNT 28 (7.5)	-
4	77 - 82	64	15	COUNT 30 (7.5)	-
5	73 - 78	75	15	COUNT 32 (7.5)	-
6	69 - 74	88	15	-	-
7	66 - 71	100	15	-	-
8	63 - 68	113	-	-	-
9	59 - 64	125	-	-	-



PACKING INFORMATION

ONE OF THE CITRUS FRUITS THAT SPREAD IN THE WINTER, ESPECIALLY, AND TAKE A FORM SIMILAR TO THE SHAPE OF ORANGES A LOT, BUT THE DIFFERENCE LIES IN THE SIZE; RICH IN VITAMIN C AS OTHER CITRUS FRUITS, PLUS HIGH LEVELS OF VITAMIN A AND B, AS WELL AS MANY OF THE MINERALS NECESSARY FOR THE BODY SUCH AS IRON, POTASSIUM, PHOSPHORUS, MAGNESIUM AND CALCIUM. BEGINNING OF THE SEASON FROM DECEMBER TO MAY

AVAILABLE TIME



Jan *Feb* *Mar* *Apr* *May* *Jun*

Jul *Aug* *Sep* *Oct* *Nov* *Dec*



PACKING INFORMATION

LEMON HAS BEEN KNOWN SINCE ANCIENT TIMES AND WAS USED IN MEDICINE AND INDUSTRY , THERE ARE IN THE LEMON MINERAL SALTS AND VITAL SUBSTANCES SUCH AS CALCIUM, IRON, PHOSPHORUS, MANGANESE, (COPPER AND VITAMINS (B 1 - B 2 - B 3 - A - C - BB WHICH PLAYS AN IMPORTANT ROLE IN THE NERVOUS BALANCE AND NUTRITION AND STRENGTHEN THE IMMUNE SYSTEM IN THE HUMAN BODY , AND THE SEASON ALMOST THROUGHOUT THE YEAR

AVAILABLE TIME



PACKAGE TYPE	TELESCOPIC CARTON	OPEN TRAY 7.5 KG	OPEN TRAY 15 KG
CARTON PER PALLET	80	140	65/70
PACKING TYPE	By COUNT	By COUNT	By CALIBER

CALIBER	DIAMETER INDEX (MM)	COUNT	L.W. (KG.NET)	L.W. (KG.NET)	L.W. (KG.NET)
1	74 - 80	56	15	7.5	15
2	68 - 76	72	15	7.5	15
3	64 - 71	88	15	7.5	-
4	59 - 67	100	15	7.5	-
5	55 - 61	125	15	7.5	-
6	53 - 57	150	15	-	-



PACKING INFORMATION

EGYPTIAN POMEGRANATES TYPES ARE:

THE POMEGRANATE TREE WITH BEAUTIFUL WHITE AND RED FLOWERS TURNS INTO DELICIOUS FRUITS
THE FRUITS USUALLY RIPEN IN THE SUMMER IN SEPTEMBER AND CONTINUE UNTIL THE END OF DECEMBER
BY REGION AND BY VARIETIES EGYPTIAN POMEGRANATE SPECIES

AVAILABLE SIZES: 6,7,8,9,10,11,12,13,14

PACKAGES:

KG N.W STANDARD OPEN TOP CARTON 4.50
KG PLASTIC TRAY 20



AVAILABLE TIME



PACKING INFORMATION

.ONIONS BELONG TO THE GARLIC FAMILY, WHICH ALSO INCLUDES GARLIC, LEEKS, AND CHIVES
 ONIONS CAN BE USED ACCORDING TO THE SEASON IN WHICH THEY GROW
 .EATING VEGETABLES AND FRUITS IS ASSOCIATED WITH A LOWER RISK OF MANY HEALTH PROBLEMS
 STUDIES SUGGEST THAT EATING VEGETARIAN FOODS SUCH AS ONIONS REDUCES
 THE RISK OF DEATH, HEART DISEASE, AND DIABETES

PRODUCT: EGYPTIAN RED ONIONS

SIZES: (40/60), (50/70), (70/90), (90/120)

TYPES OF PACKAGING:

KG – MESH BAG 10
 KG – MESH BAG 25
 KG – WOODEN BINS 550
 KG – JUMBO BAG 1250

CONTAINER CAPACITY (40 FEET): 25-28 TONS

AVAILABLE TIME



PACKING INFORMATION

POTATOES ARE ONE OF THE MOST IMPORTANT AND MOST CONSUMED FOODS WORLDWIDE
POTATOES GIVE A GOOD AMOUNT OF DIETARY FIBER, FOLATE, NIACIN, PANTOTHENIC ACID (VITAMIN B5),
POTASSIUM, VITAMIN C, THIAMINE AND VITAMIN B6
MAINTAINS HEART HEALTH AND REDUCES HEART ATTACKS .
POTATOES CONTAIN VITAMIN C, FOLIC ACID AND SOME FIBER AND ANTIOXIDANTS THAT HELP PREVENT
CANCER, ESPECIALLY COLON CANCER. THEY ALSO PROTECT CELLS FROM DAMAGE AND PREVENT DISEASE

PACKING: 5 - 10 - 15 - 25 KG MESH BAG

AVAILABLE TIME



Jan *Feb* *Mar* *Apr* *May* *Jun*

Jul *Aug* *Sep* *Oct* *Nov* *Dec*



PACKING INFORMATION

GARLIC BELONGS TO THE GARLIC FAMILY THAT THE ONION BELONGS TO. THE ORIGIN OF THE GARLIC IS IN CENTRAL ASIA. IT CAN GROW BETTER IN MOIST, FERTILE SOILS AND SUNNY AREAS. GARLIC HAS MANY SPECIES, BUT THE MOST FAMOUS AND USED TYPE UP TO A MAXIMUM LENGTH OF 91.4 CENTIMETERS, AND GARLIC LEAVES ARE SIMILAR TO THE LEAVES OF THE PLANT SHALLOTS, AS THEY ARE LONG AND FLAT, AND THERE ARE GARLIC CLOVES WRAPPED AROUND THE BOTTOM OF THE PLANT AND THE NUMBER OF BETWEEN 4-60 CLOVES, AND COVERED WITH MEMBRANE SIMILAR TO PAPER, IN ADDITION TO THE GARLIC PLANT HAS A STRONG SMELL WHEN CUT, IT ALSO HAS A PUNGENT TASTE AND IS USED FREQUENTLY IN COOKING, AND GARLIC CLOVES AND LEAVES ARE CONSIDERED PARTS OF THE PLANT THAT CAN BE EATEN, AND CAN BE USED FOR SEASONING FOODS, AND FOR THERAPEUTIC PURPOSES.

PACKAGE: OPEN TOP & TELESCOPIC CARTON ,NET BAG
 MESH BAG , PLASTIC & BAMBOO BASKET
 SIZE : 40 , 45 , 50 , 55 , 60 , 65 , 70 , 75 , 80 MM



AVAILABLE TIME



PACKING INFORMATION

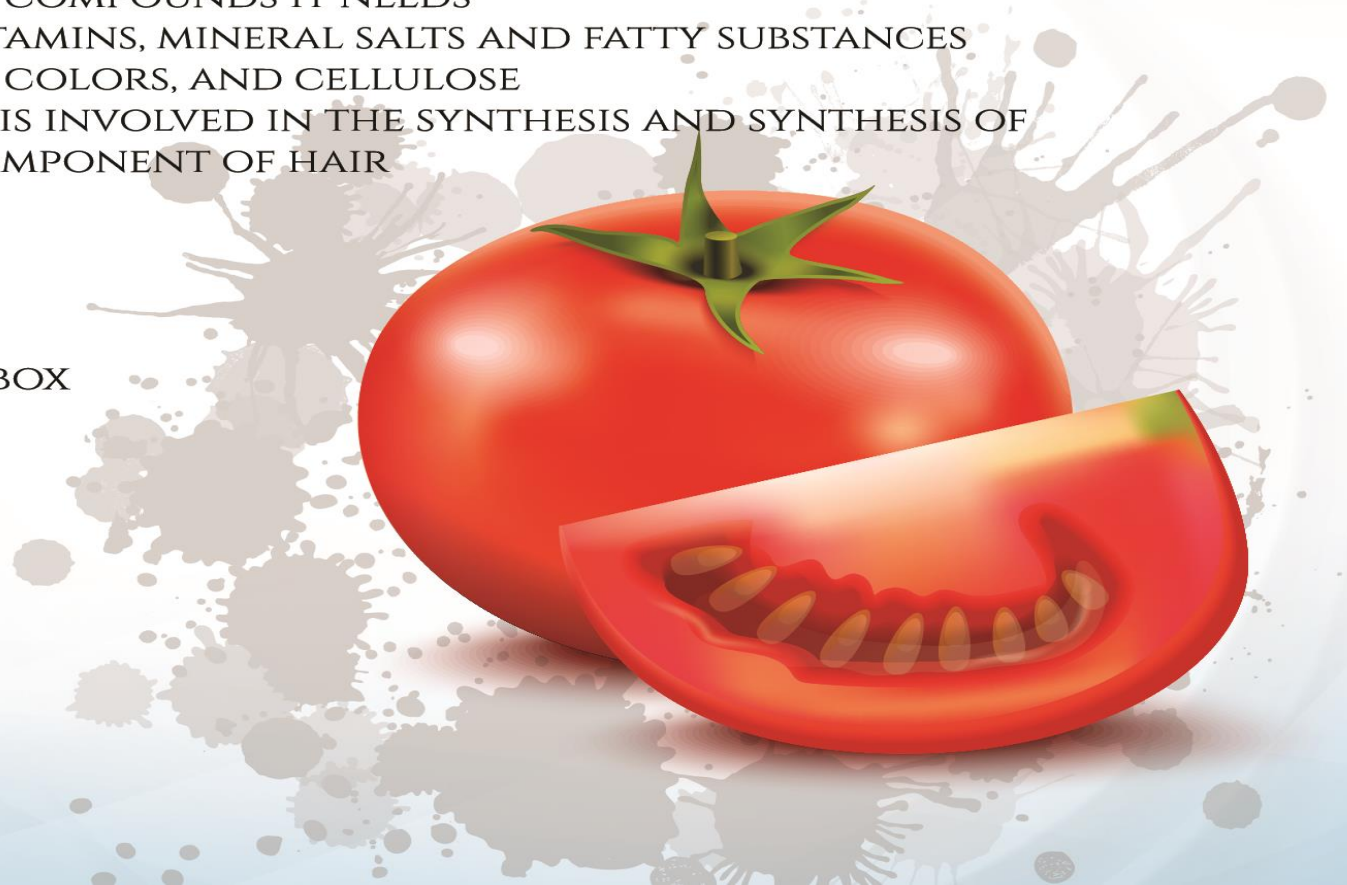
THE TOMATO PLANT BELONGS TO THE EGGPLANT FAMILY AND GROWS IN MOST COUNTRIES THROUGHOUT THE YEAR; IT GROWS IN SUCCESSIVE CYCLES AND SEASONS
TOMATO SHRUBS ARE SMALL, SEASONAL, AND HAVE DIFFERENT SHAPES
TOMATO IS A FUNCTIONAL FOOD THAT PROVIDES THE BODY WITH THE ESSENTIAL NUTRIENTS AND MANY CHEMICAL COMPOUNDS IT NEEDS
,TOMATOES CONTAIN A LOT OF MINERALS AND VITAMINS, MINERAL SALTS AND FATTY SUBSTANCES AS WELL AS CARBOHYDRATES, PROTEINS, NATURAL COLORS, AND CELLULOSE
TOMATO IS A RICH SOURCE OF VITAMIN C, WHICH IS INVOLVED IN THE SYNTHESIS AND SYNTHESIS OF COLLAGEN IN THE BODY, AND IS AN ESSENTIAL COMPONENT OF HAIR

VARIETIES: R196, BAR 84 OR CHERRY TOMATO

SIZES: LENGTH 3 ~ 5 CM

PACKAGING: 2 KG OR 5 KG CARTONS OR PLASTIC BOX

AVAILABLE TIME ❄️ ☁️ ☂️ 🌬️ 🌲





CERTIFICATE

AL EHSSAN FOR EXPORT LTD.

3 NEW BANHA, VILLAS AREA , NILE TOWER , FIRST FLOOR , QALYUBIA, EGYPT

has implemented and maintains a **Quality Management System**

EXPORTING OF AGRICULTURAL CROPS

Non-applicable Clauses : 8.3, 8.5.1(f), 8.5.3

EA 29/1

Through an audit, documented in a report, it was verified that the management System fulfills the requirements of the following standard:

ISO 9001:2015

Certificate registration no : QA-D/EGY/9001/0699
Valid from : 17.08.2018
Valid until : 01.09.2019
Date of original certification : 02.09.2016

B. Adak

Overseas Operation Manager
Begum ADAKAN
Stuttgart 2018.08.17

ALBERK QA TECHNIC GMBH
Theodor Heuss Strasse 6 D-70174
Stuttgart GERMANY
Tel: +49 711 9454 0621 Fax: +49 711 9454 4946
www.qatechnic.de





Egypt office:

joumana tower - El Velal
Banha - Egypt -

Noman@Alehsan.co
Sobhi@Alehsan.co
Omran@Alehsan.co

Mobile:

Noman: (+2) 010246669889

Sobhi: (+2) 01128184866

Omran: (+2) 01013517371

Email:

Info@Alehsan.co

www.Alehsan.co

